

**Compact Sounder**  
with  
**Excellent Performance**

**FURUNO®**

# 5-INCH LCD SOUNDER

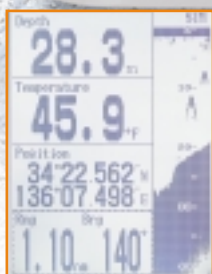
Model **LS-4100**

*Actual Size*

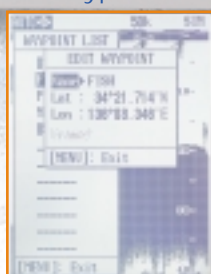
- 50/200 kHz Dual Frequency Transceiver
- High power 300 W rms
- Advanced high-contrast sunlight monochrome LCD (240 x 320 pixels)
- "White line" and "Sea-Through" technology discriminates echoes on the seabed or anywhere in the water column
- Wind direction and speed display\*
- "Mini-navigator" feature provides 12 "Go To" waypoints with programmable names
- Unique Bottom-Lock Fish Alarm mode provides consistent audible bottom fish detection in varying depths



Text Nav Data



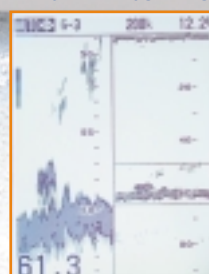
Waypoints



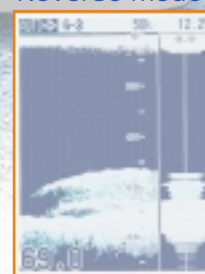
Graphical Nav Data



Bottom Zoom with white line



Single freq (50 kHz) with A-scope Reverse mode



The future today with FURUNO's electronics technology.

**FURUNO ELECTRIC CO., LTD.**

9-52 Ashihara-cho, Nishinomiya City, Japan Phone: +81 (0)798 65-2111  
Fax: +81 (0)798 65-4200, 66-4622 URL: [www.furuno.co.jp](http://www.furuno.co.jp)

Catalogue No. E-396

TRADE MARK REGISTERED  
MARCA REGISTRADA

The LS-4100 is a new dual frequency sounder designed for a small pleasure craft. It features a 5" high-definition silver LCD screen that offers a remarkably detailed picture of fish and bottom structure. The LS-4100 offers dual frequency capabilities, both 50 and 200 kHz, and has an outstanding 300 Watt rms (2400 Watt peak) output power, making this sounder the leader in its class.

Basic display modes include single LF/HF, Dual, Bottom-Lock Expansion, Bottom-Zoom, A-scope and Marker Zoom and two Nav Data Display modes. Choose from a variety of modes, including manual or two auto modes, fishing or cruising. The cruising mode uses a higher clutter rejection setting than the fishing mode, making it useful to track the bottom while cruising.

The range can be changed manually or automatically; the LS-4100 will redraw an entire echogram so that the contour can be shown seamlessly.

The LS-4100 has the unique ability to be a handy navigational organizer when connected to appropriate sensors. It can display a variety of information including: water temperature, wind direction/speed, L/L, XTE and distance run in a graphical or text format. With a GPS or WAAS receiver connected, the "Mini-Navigator" feature is capable of storing up to 12 waypoints with programmable names. Any waypoint can be selected as a destination.

## SPECIFICATIONS OF LS-4100

- 1. Display** 5-inch monochrome LCD, 4 gray tones, 240 (H) x 320 (V) pixels
- 2. Frequency** 50 and 200 kHz
- 3. Output Power** 300 W rms
- 4. Display Modes** Normal (Single/Dual), Bottom-Zoom, Bottom-Lock Expansion, Marker Zoom, 2 pages Nav Data and A-scope
- 5. Basic Range** (m, ft, fath, p/b can be selected in menu) 2 to 500 m
- 6. Range Phasing** Up to 500 m
- 7. Bottom-lock Range** 3 to 10 m selectable in menu
- 8. Zoom Scale** 2 to 50 m selectable in menu
- 9. Picture Advance** Stop, 1/16, 1/8, 1/4, 1/2, 1/1, 2/1, 4/1
- 10. Pulselength and Pulse Repetition Rates**

Range (m)	5-30	80	150	200	300
Pulselength (ms)	0.22	0.32	0.42	0.62	0.82
PRR (Pulses/min)	500	256	167	136	100
- 11. Interface** (NMEA 0183 Ver. 1.5/2.0/3.0)  
NMEA connector can be set on menu for IN or IN/OUT.  
Input: RMA, RMB, RMC, GGA, VTG, VHW, MTW, XTE, BWC, MDA, GLL, HDT, HDG, MWV  
Output: Water depth (SDDPT), Speed\* (VWVHW), Water temperature\* (YCMTW), Target position (SDTLL)\*\*, Position/Depth/Temp (PFECXXX)\*\*

\* When connected with a transducer with speed and temperature sensor

\*\* When connected with a GPS

- 12. Alarm** Bottom, Fish, Temp, Arrival, Speed and Battery

### POWER SUPPLY

12 VDC, 6 W

### ENVIRONMENT (Display Unit)

Temperature: -15°C to +55 °C (IEC 60945)

Waterproofing: IPX5 (IEC 60529), CFR-46 (USCG standard)

### EQUIPMENT LIST

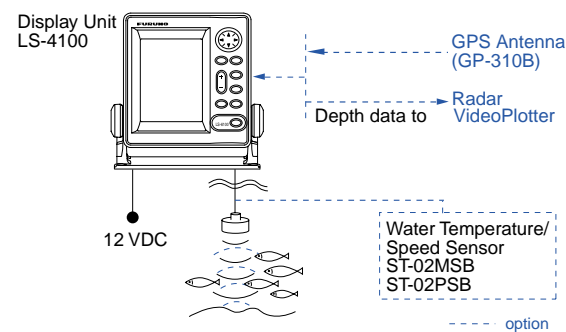
#### Standard

1. Display Unit
2. Installation Materials and Standard Spare Parts

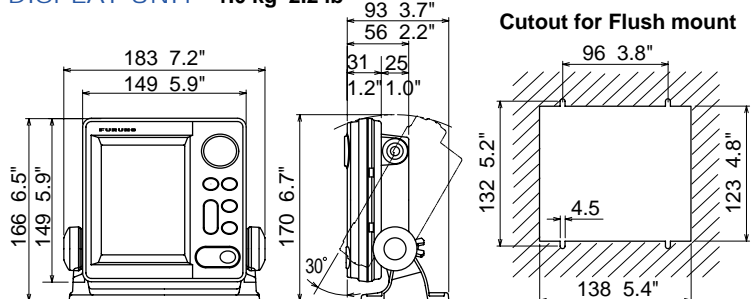
#### Option

1. Cable for Speed/Temperature Sensor 02S4147-1
2. Inner Hull Kit 22S0191-0
3. Transducer (*Specify when ordering*)  
520-5PSD (Plastic, Thru-hull type)  
525-5PWD (Plastic, Transom type)  
520-5MSD (Bronze, Thru-hull type)  
*with speed/temperature sensor*  
525ST-PWD (Plastic, Transom type)  
525ST-MSD (Bronze, Thru-hull type)

### INTERCONNECTION DIAGRAM

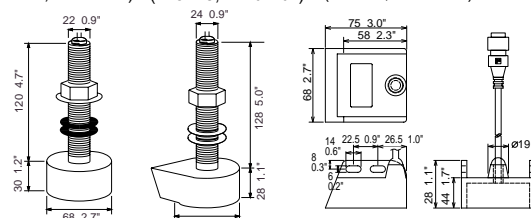


### DISPLAY UNIT 1.0 kg 2.2 lb



### TRANSDUCERS (Option)

- 520-5PSD** (Plastic, Thru-hull) **520-5MSD** (Bronze, Thru-hull) **525-5PWD** (Plastic, Transom)



SPECIFICATIONS SUBJECT TO CHANGE WITHOUT NOTICE

0301XSS Printed in Japan

**FURUNO U.S.A., INC.**  
Camas, Washington, U.S.A.  
Phone: +1 360-834-9300 Telefax: +1 360-834-9400

**FURUNO (UK) LIMITED**  
Denmead, Hampshire, U.K.  
Phone: +44 2392-230303 Telefax: +44 2392-230101

**FURUNO FRANCE S.A.**  
Bordeaux-Mérignac, France  
Phone: +33 5 56 13 48 00 Telefax: +33 5 56 13 48 01

**FURUNO ESPAÑA S.A.**  
Madrid, Spain  
Phone: +34 91-725-90-88 Telefax: +34 91-725-98-97

**FURUNO DANMARK AS**  
Hvidovre, Denmark  
Phone: +45 36 77 45 00 Telefax: +45 36 77 45 01

**FURUNO NORGE A/S**  
Ålesund, Norway  
Phone: +47 70 102950 Telefax: +47 70 127021

**FURUNO SVERIGE AB**  
Västra Frölunda, Sweden  
Phone: +46 31-7098940 Telefax: +46 31-497093

**FURUNO SUOMI OY**  
Helsinki, Finland  
Phone: +358 9 341 7570 Telefax: +358 9 341 5716